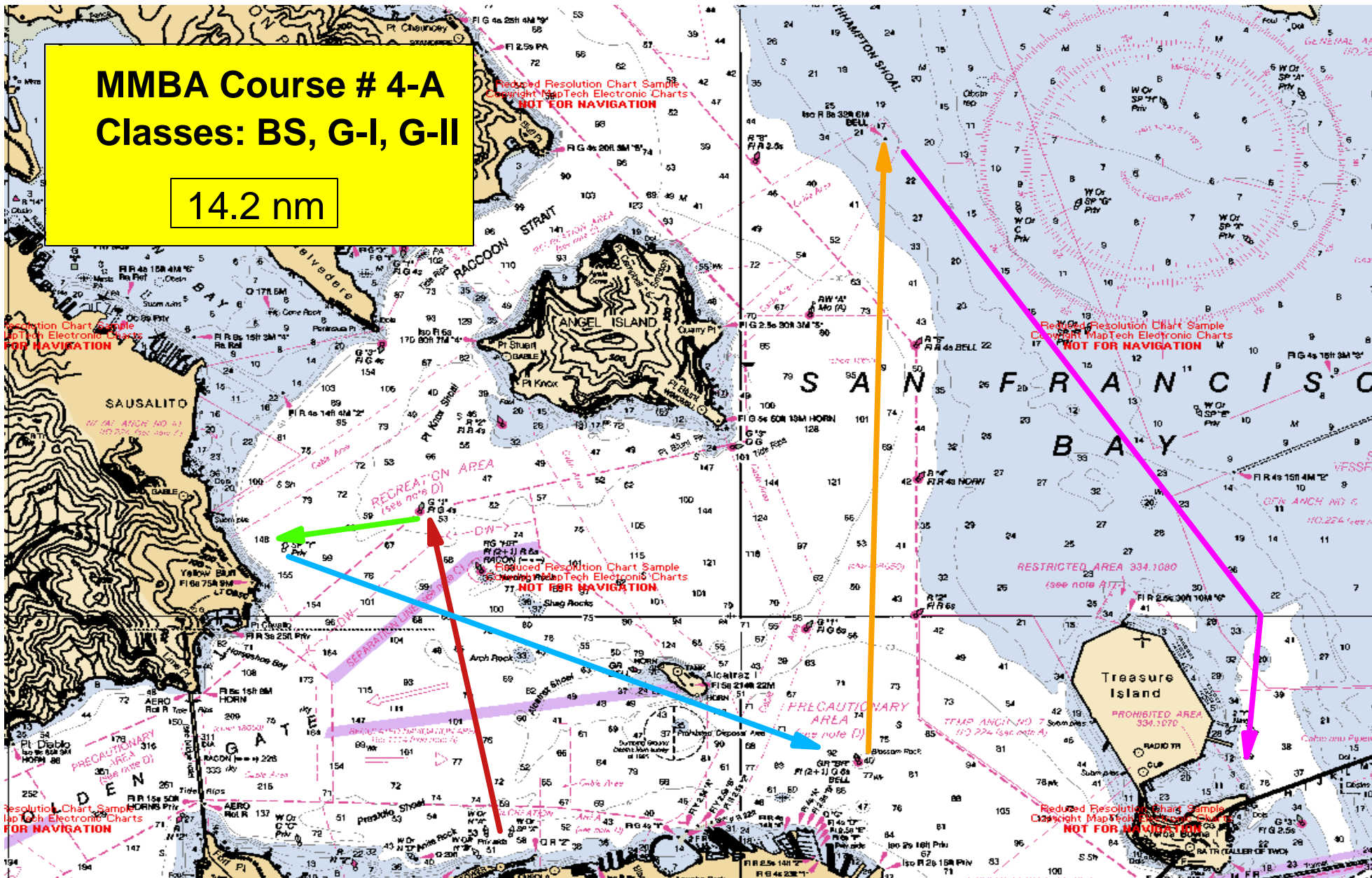


MMBA Course # 4-A Classes: BS, G-I, G-II

14.2 nm



- ← 1st Leg: Start Spheres "A" - "X" to G"1" (Little Harding Rock) -- Leave to Port
- ← 2nd Leg: G"1" (Little Harding Rock) to Yellow Can "Y" (Yellow Bluff) -- Leave to Port
- 3rd Yellow Can "Y" (Yellow Bluff) to GR "BR" (Blossom Rock) -- Leave to Port
- Leave Alcatraz Port or Starboard, Skipper's Choice --
- 4th Leg: GR "BR" (Blossom Rock) to R 32ft Bell (Southampton Shoal) -- Leave to Starboard
- 5th Leg: R 32ft Bell (Southampton Shoal) to Finish - East of Pier SE of Treasure Island.